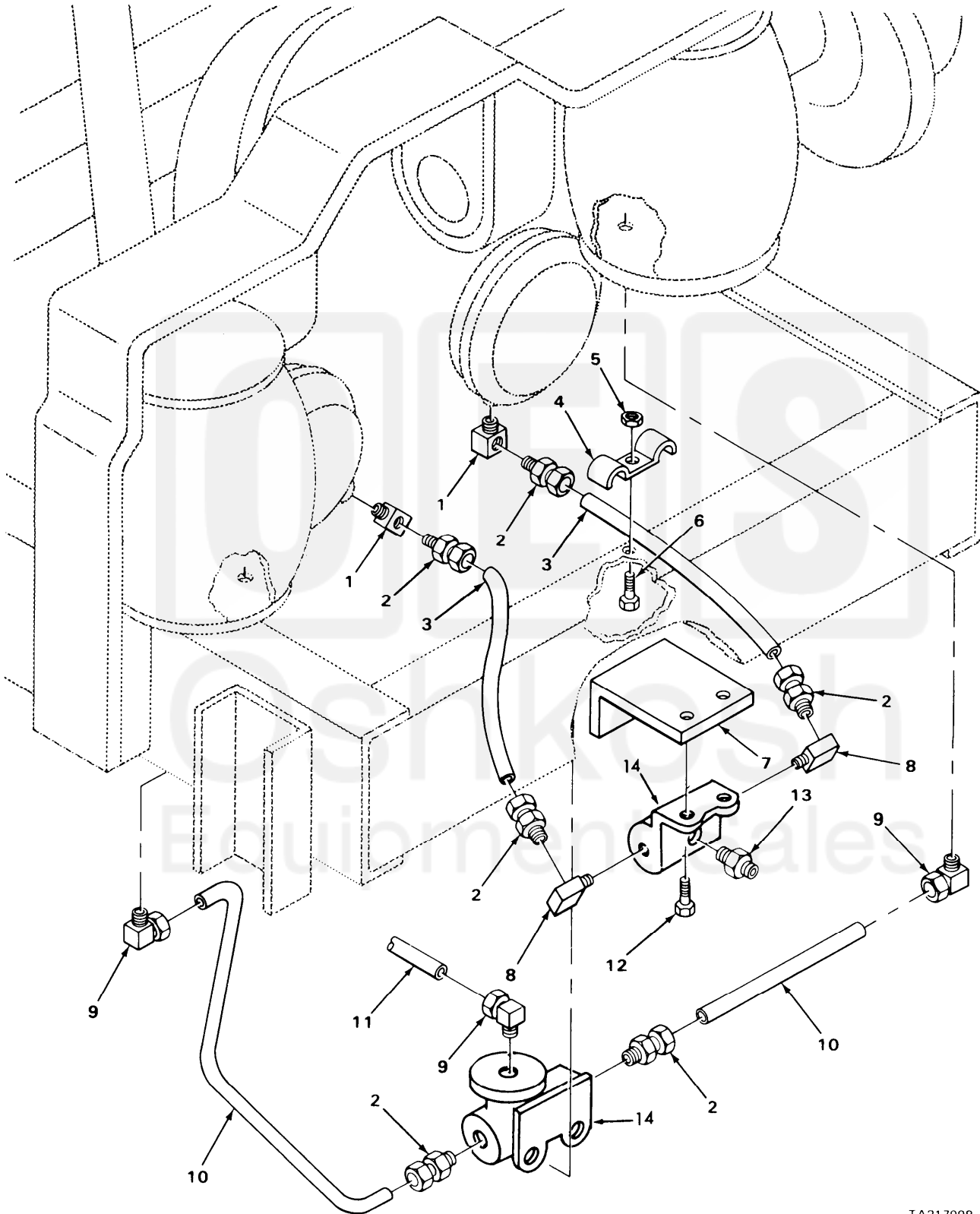


SECTION II

TM9-2320-273-24P



TA217098

FIGURE 176. AIR BRAKE CHAMBER LINES AND FITTINGS (MODELS M917, M919 AND M920).

Current part is item (14) on diagram. Available at www.oshkoshequipment.com

SECTION II (1)	ITEM (2)	SMR (3)	FSCM (4)	TM9-2320-273-24P PART NUMBER	(5)	DESCRIPTION AND USABLE ON CODE (UOC)	(6)
GROUP:1208 AIR BRAKE SYSTEM							
FIGURE 176. AIR BRAKE CHAMBER LINES AND FITTINGS (MODELS M917, M919 AND M920).							
1	PAOZZ	88044	AN915-3			ELBOW UOC:U23,U25,U26	2
2	PAOZZ	93061	68NTA-8-6			ADAPTER, STRAIGHT, PI UOC:U23,U25,U26	6
3	PAOZZ	34623	M/145-20021			HOSE ASSEMBLY, NONME UOC:U23,U25,U26	2
4	PAOZZ	75272	COV-1311			CLAMP, LOOP UOC:U23,U25,U26	1
5	PAOZZ	96906	MS51967-5			NUT, PLAIN, HEXAGON UOC:U23,U25,U26	1
6	PAOZZ	96906	MS90728-32			BOLT, MACHINE UOC:U23,U25,U26	1
7	PBOZZ	34623	MB10-20109			BRACKET, ANGLE UOC:U23,U25,U26	1
8	PAOZZ	03924	1024-8-8B			ELBOW UOC:U23,U25,U26	2
9	PAOZZ	10988	222-2645			ELBOW UOC:U21,U25,U26	3
10	MOOZZ	34623	M/357-20092			TUBE, NONMETALLIC MAKE FROM P/N 246115 UOC:U23,U25,U26	2
11	MOOZZ	34623	M/357-20100			TUBE, NONMETALLIC MAKE FROM P/N CPR104420-1 UOC:U23,U25,U26	1
12	PAOZZ	24617	9419032			BOLT, MACHINE UOC:U23,U25,U26	2
13	PAOZZ	79470	1468X10X6			ADAPTER, STRAIGHT, PI UOC:U23,U25,U26	1
14	PAOZZ	57005	1032			VALVE, AIRBAG PRESSU UOC:U23,U25,U26	1

END OF FIGURE



Current part is item (14) on diagram. Available at www.oshkoshequipment.com